

# Marklein Builders, Inc.

**BUILDER OF CUSTOM HOMES**

Commercial • Land Development • Lots for Sale • Remodeling



Building Quality Homes in  
Janesville for over 45 years.

## LOTS AVAILABLE

### NORTHEAST:

- Meadows
- Briar Crest
- Brentwood Hills

### WEST:

- Waveland Orchard
- Sherwood Hills
- Hamilton Heights

### SOUTH:

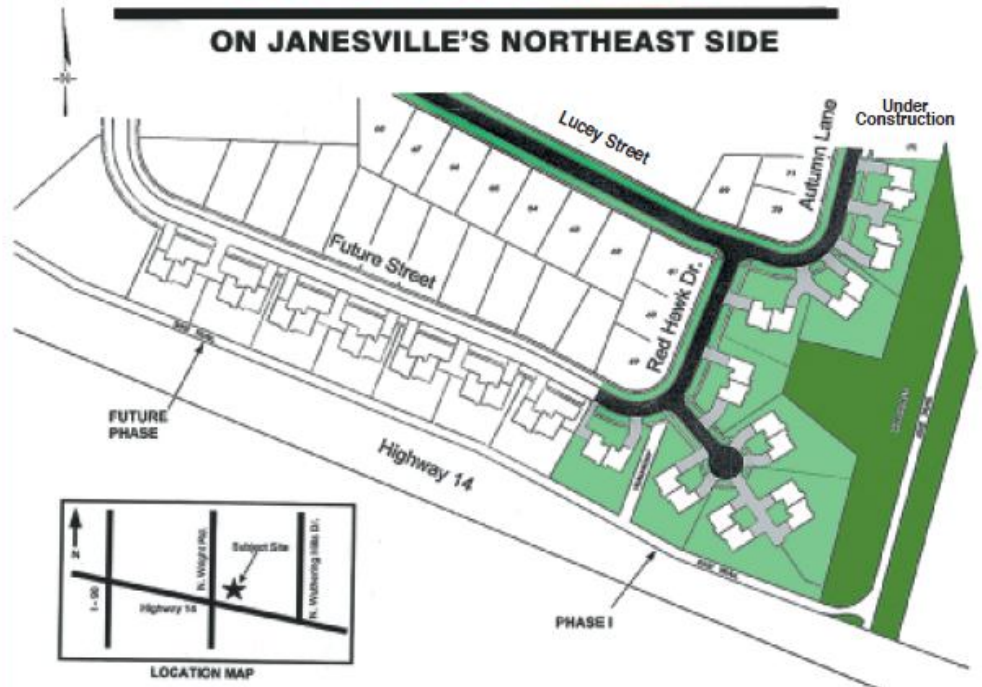
- Oakridge Vista

### RURAL:

- Zermatt Hills

## RED HAWK CONDOMINIUMS

ON JANESVILLE'S NORTHEAST SIDE



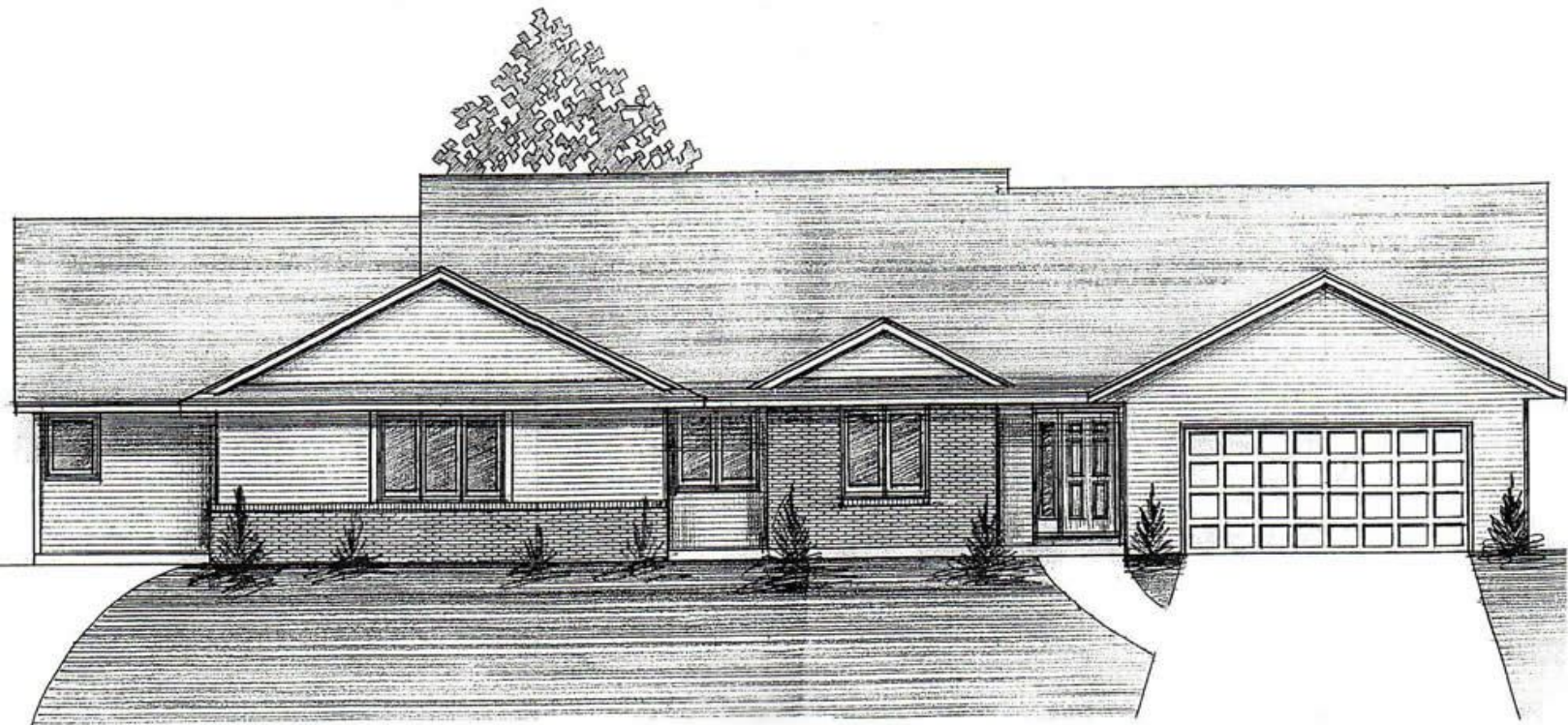
---

# RED HAWK

## CONDOMINIUMS

---

Janesville, WI



**Marklein** *Builders, Inc.*

**BUILDER OF CUSTOM HOMES**

3435 E. Milwaukee Street, Janesville, WI 53546

Phone: 608-752-0814

E-Mail: [marbldrs@ticon.net](mailto:marbldrs@ticon.net)

---

# RED HAWK

## CONDOMINIUMS

---

ON JANESVILLE'S NORTHEAST SIDE

### STANDARD FEATURES:

Anderson 400 series Low E insulated windows  
30 year architectural shingles  
Handicap accessible  
Finished garage  
Brick and Vinyl siding  
Aluminum soffit and fascia  
Plaster walls and ceilings  
Hardwood and tile floors  
Gas fireplace  
Tile walk in shower  
Walk in closets  
Merillat deluxe cabinets  
Delta faucets  
Energy star products  
94% efficient furnace and central air conditioning  
Basement plumbing rough in for future bathroom  
50 gallon gas water heater  
Landscaping  
Adjacent to walking/biking trail/greenbelt  
Covered patio

### DESIGN OPTIONS:

Choose from many upgrades  
Design your own layout  
Choose your own décor

### Monthly association fees include:

Insurance  
Yard maintenance and snow removal  
Reserve fund

CALL OUR OFFICE FOR ADDITIONAL INFORMATION

## **Marklein Builders, Inc.**

**BUILDER OF CUSTOM HOMES**

3435 E. Milwaukee Street, Janesville, WI 53546

Phone: 608-752-0814

E-Mail: [marbldrs@ticon.net](mailto:marbldrs@ticon.net)

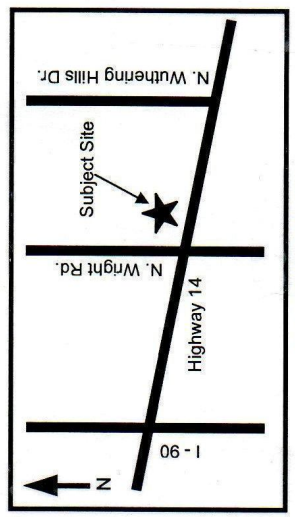
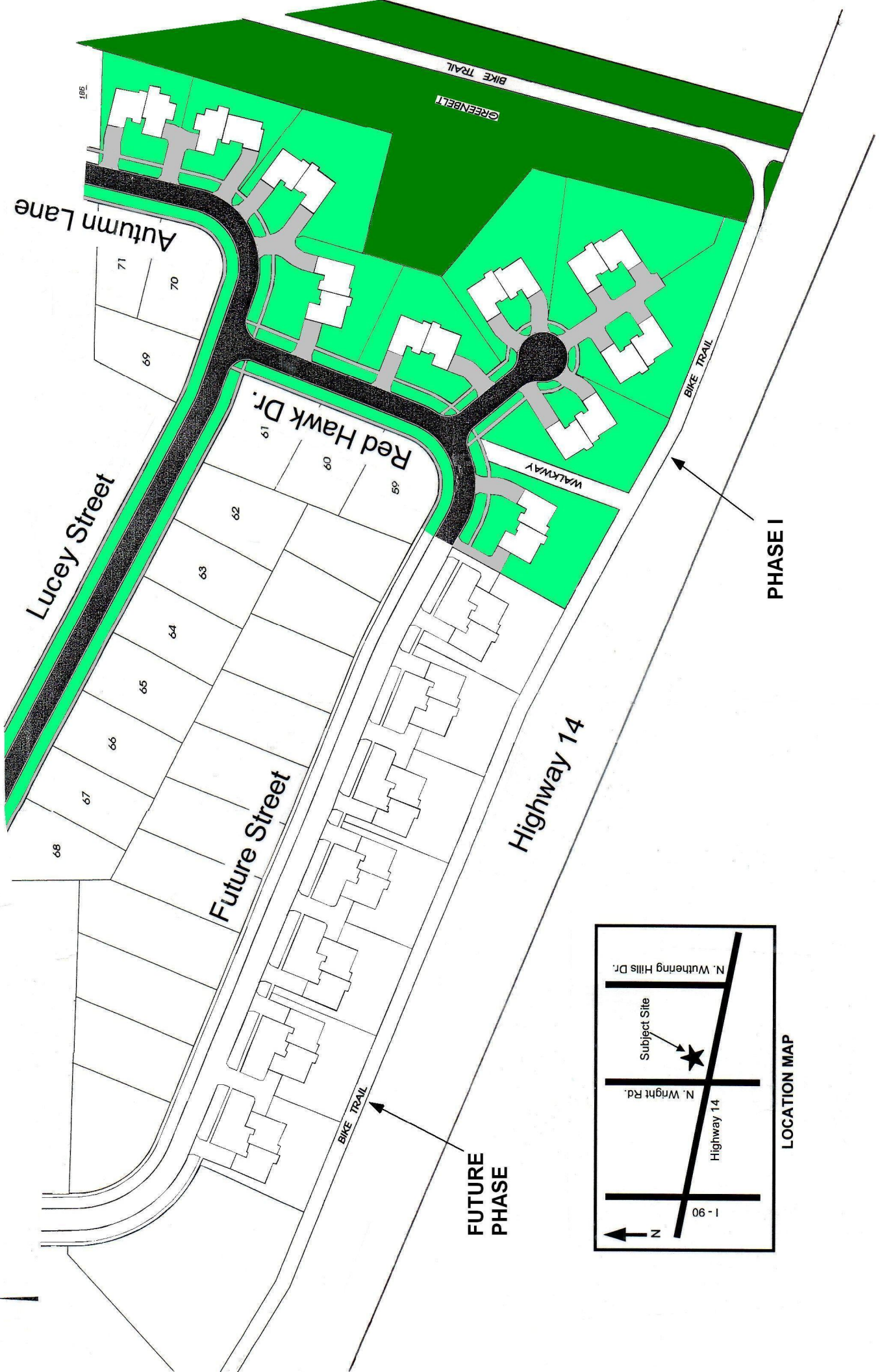


# RED HAWK

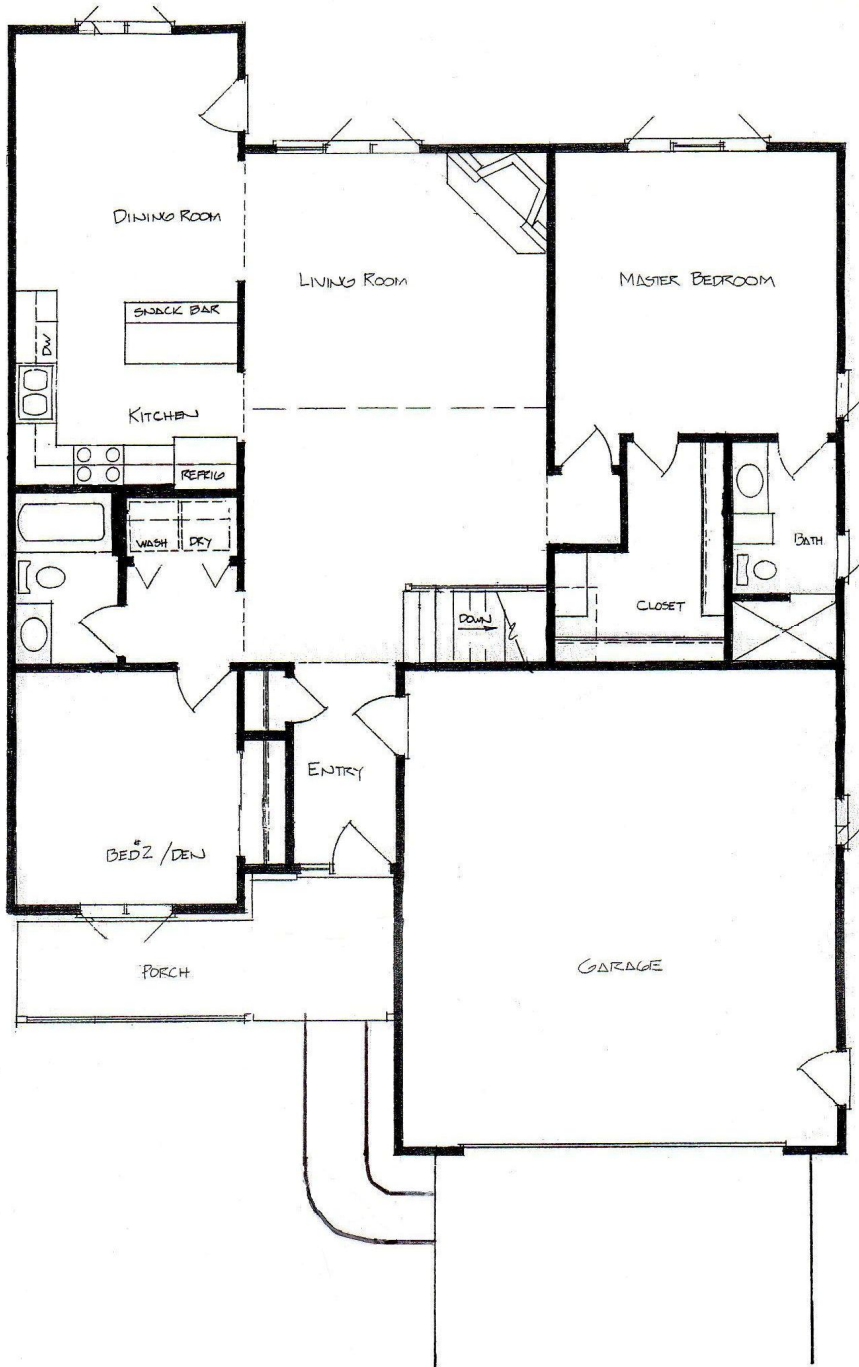
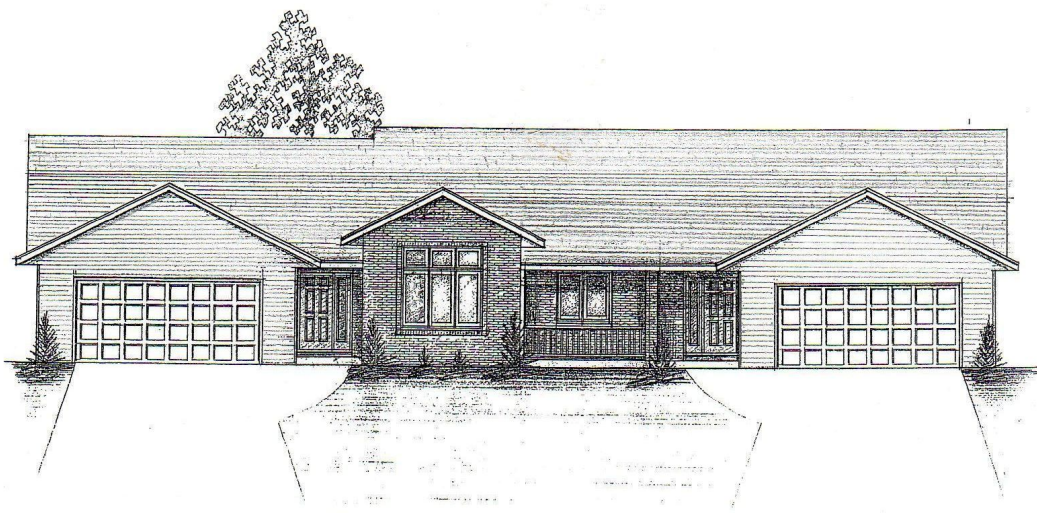
CONDOMINIUMS

MARKLEIN BUILDERS, INC.

608 • 752 • 0814

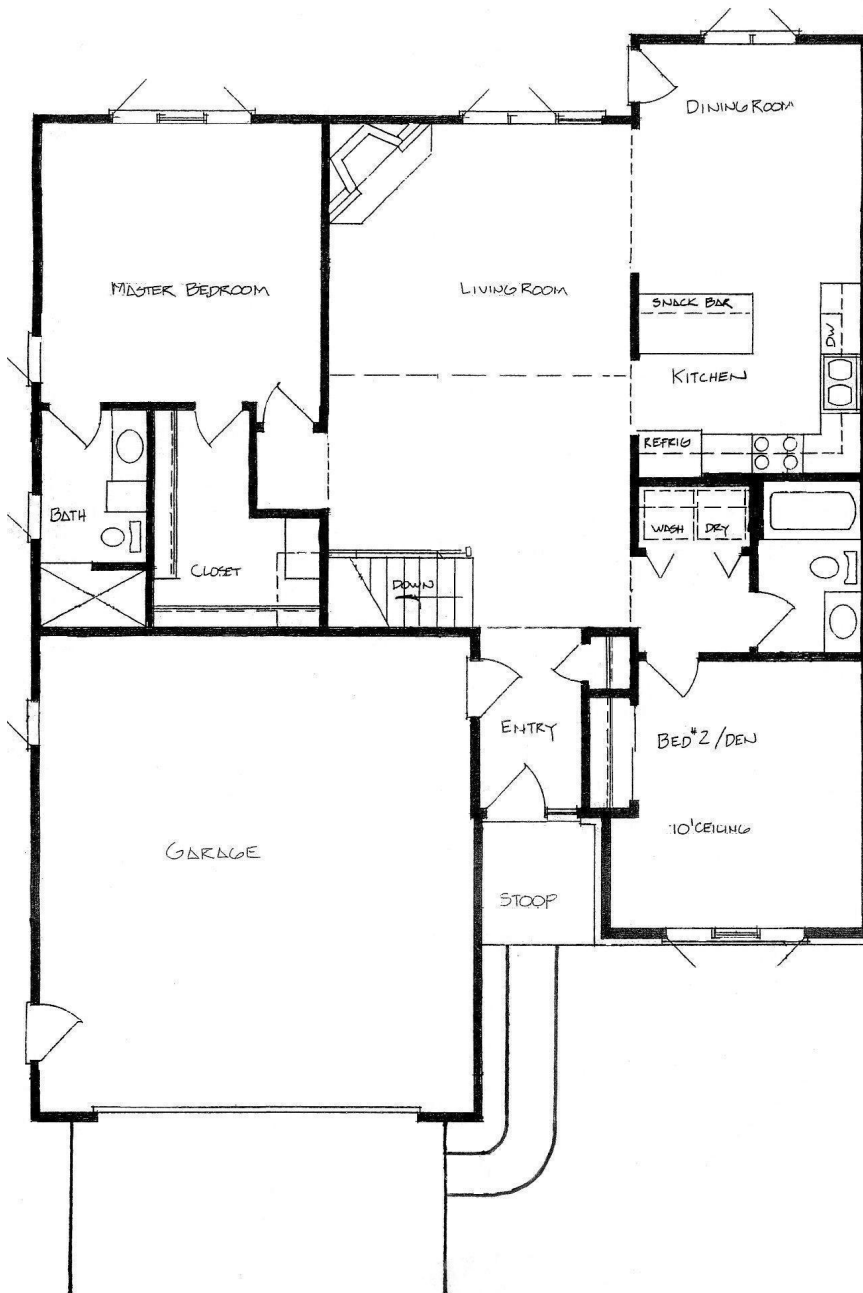
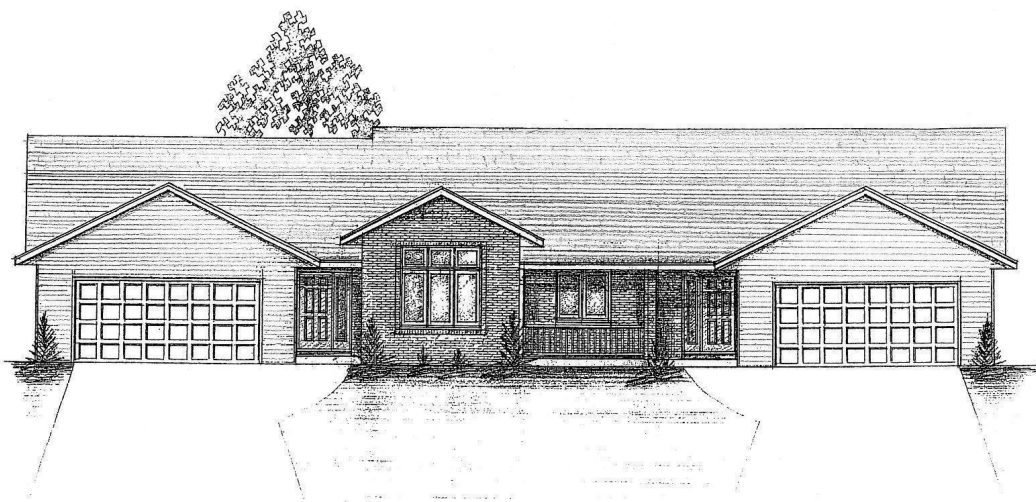


LOCATION MAP



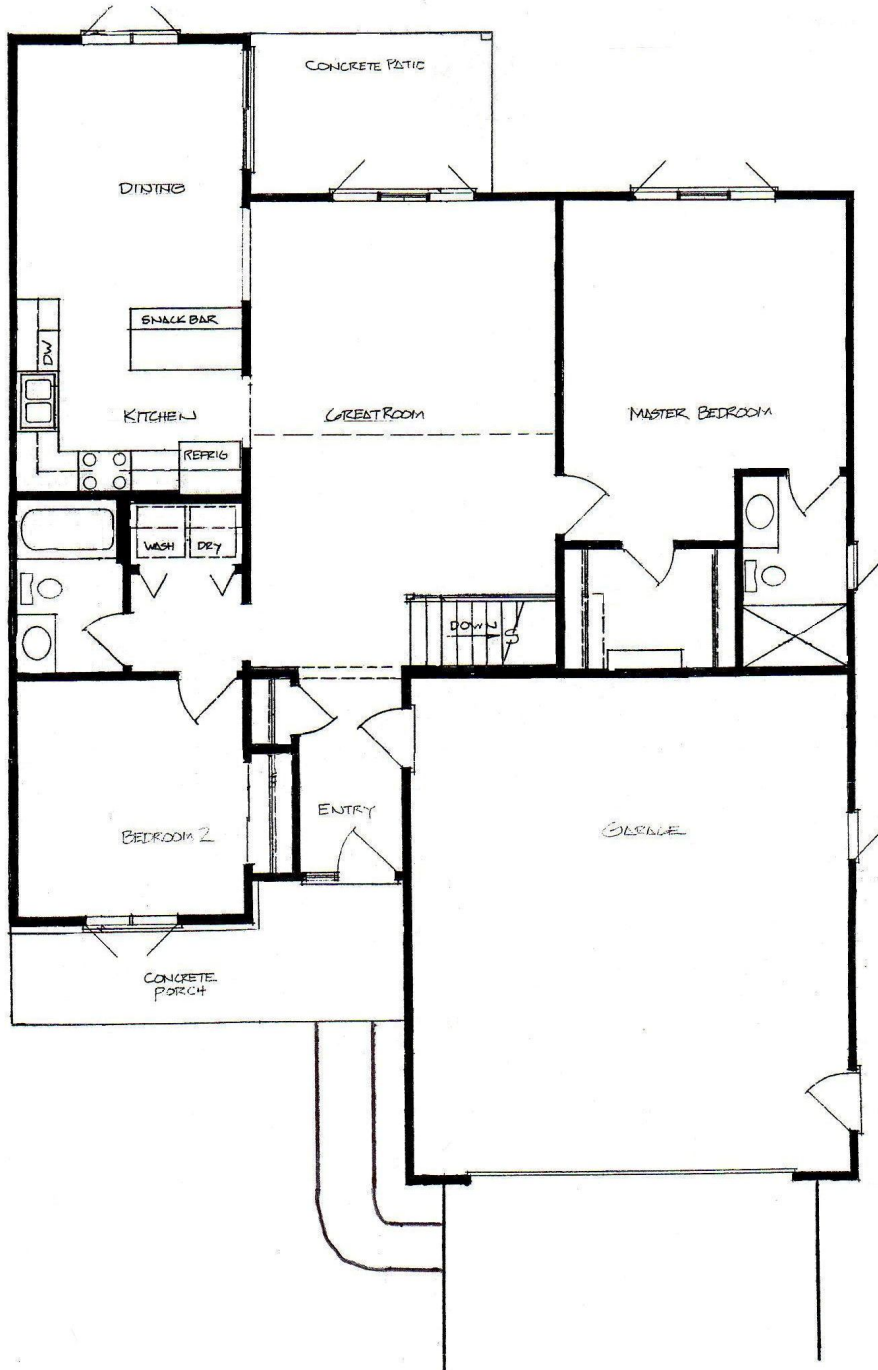
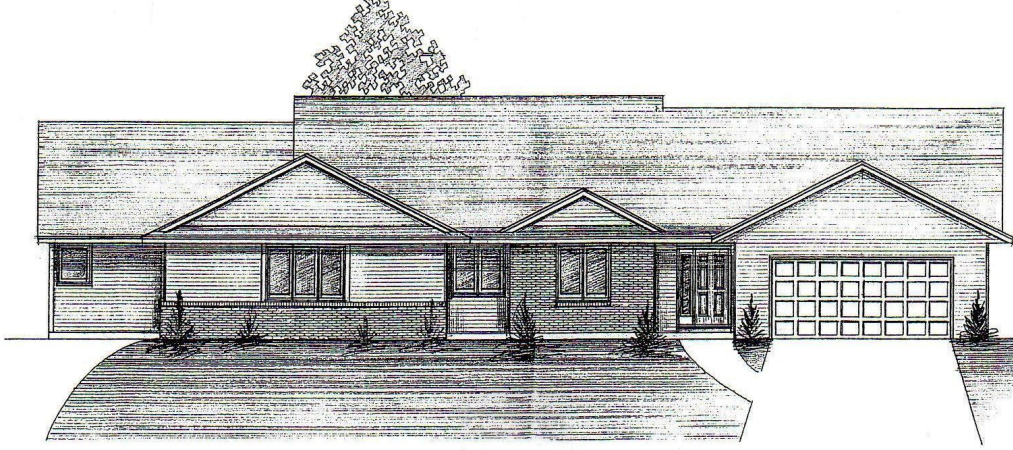
**RED HAWK**  
CONDOMINIUMS

- MAIN LEVEL**  
 1393 sq. ft.  
 Two Bedroom  
 Master Suite  
 Main Bathroom  
 Kitchen  
 Dining  
 Great Room  
 First Floor Laundry  
 Two Car Garage  
 Fireplace  
 No Step Entry



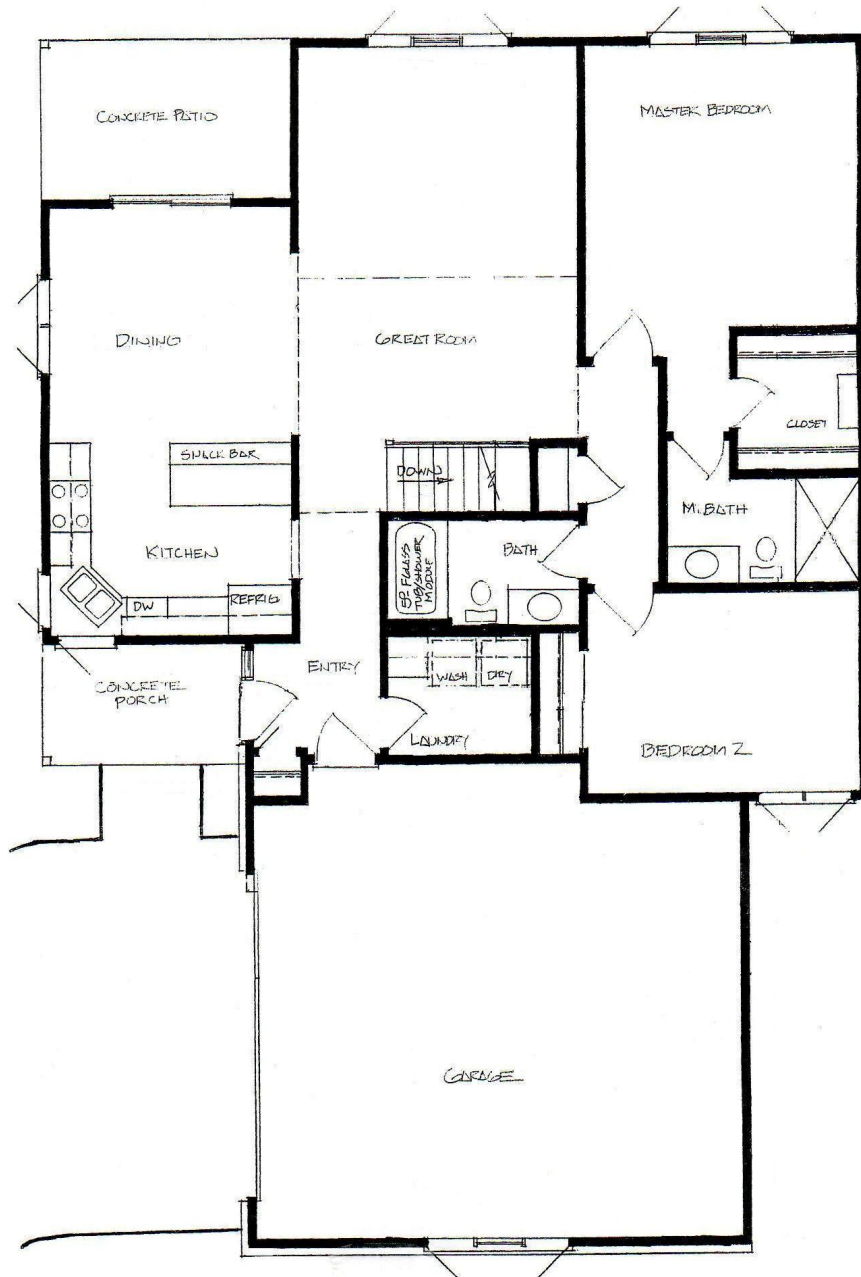
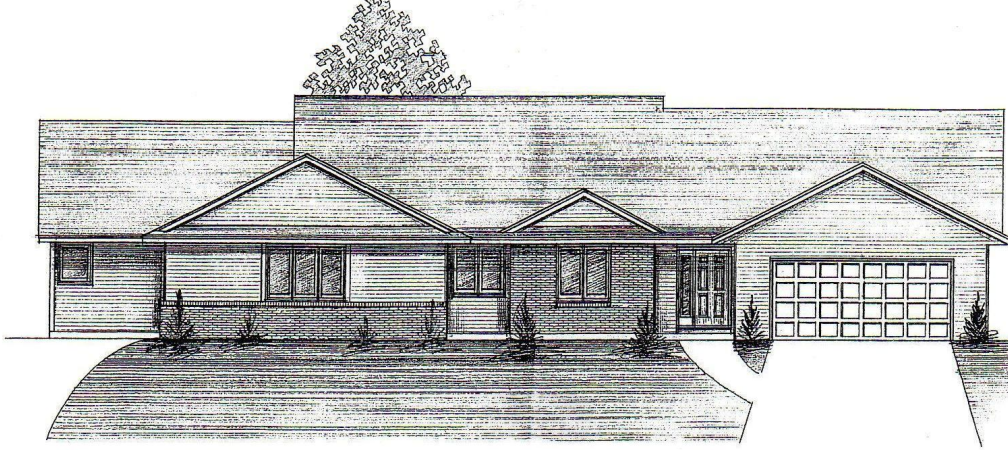
**RED HAWK**  
CONDOMINIUMS

- MAIN LEVEL**  
 1405 sq. ft.  
 Two Bedroom  
 Master Suite  
 Main Bathroom  
 Kitchen  
 Dining  
 Great Room  
 First Floor Laundry  
 Two Car Garage  
 Fireplace  
 No Step Entry



**RED HAWK**  
CONDOMINIUMS

- MAIN LEVEL**  
 1328 sq. ft.  
 Two Bedroom  
 Master Suite  
 Main Bathroom  
 Kitchen  
 Dining  
 Great Room  
 First Floor Laundry  
 Two Car Garage  
 Covered Patio  
 No Step Entry

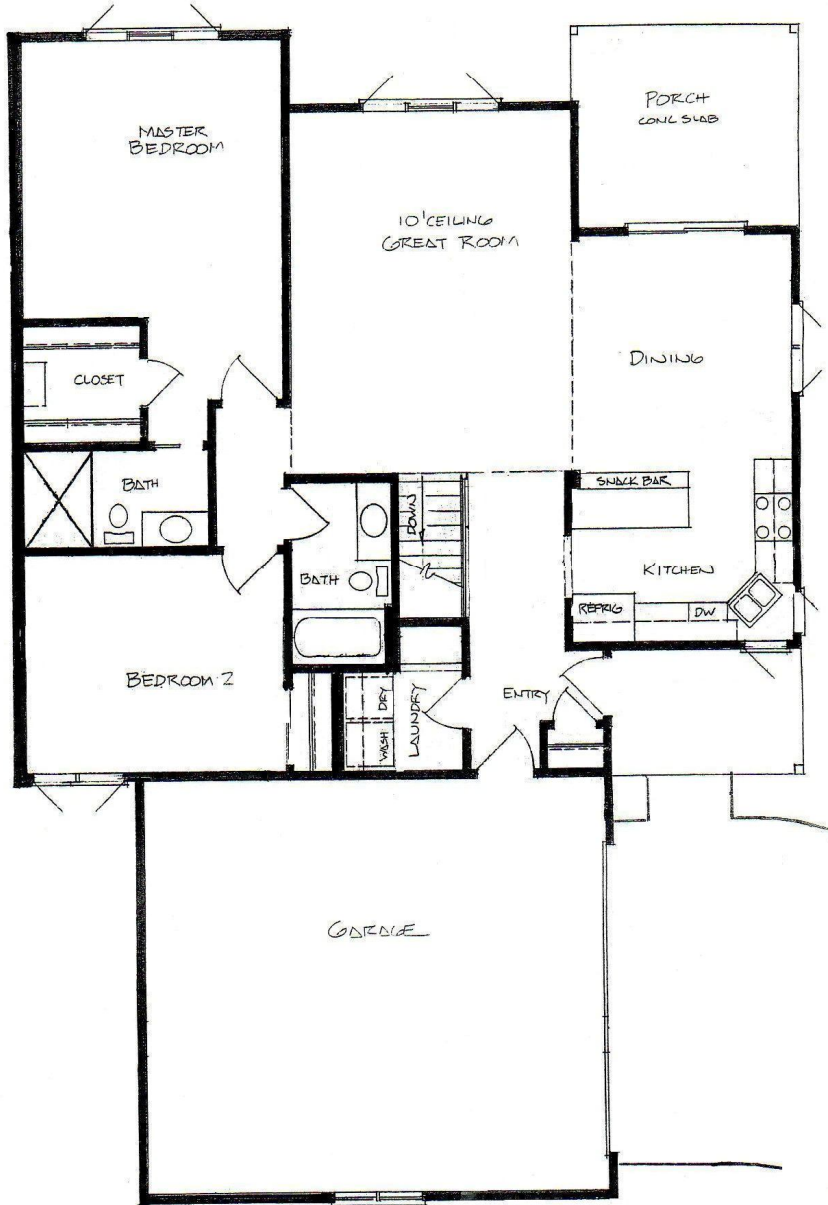
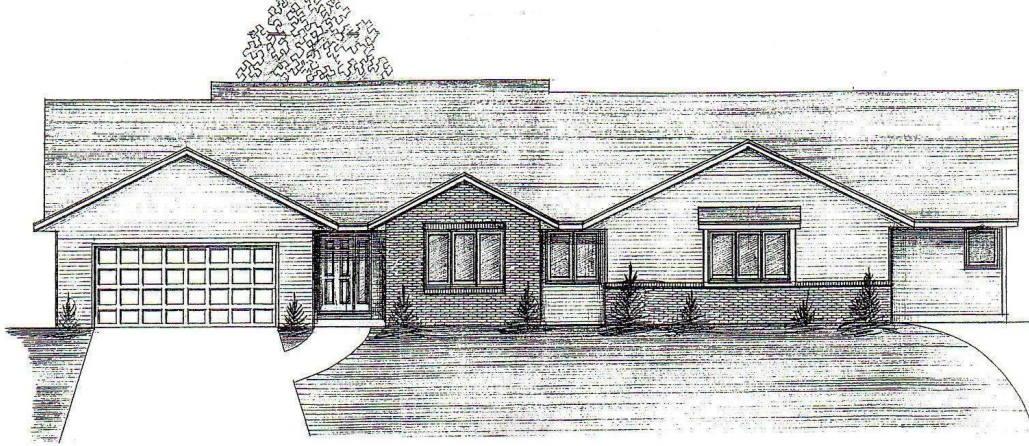


**RED HAWK**  
CONDOMINIUMS

**MAIN LEVEL**

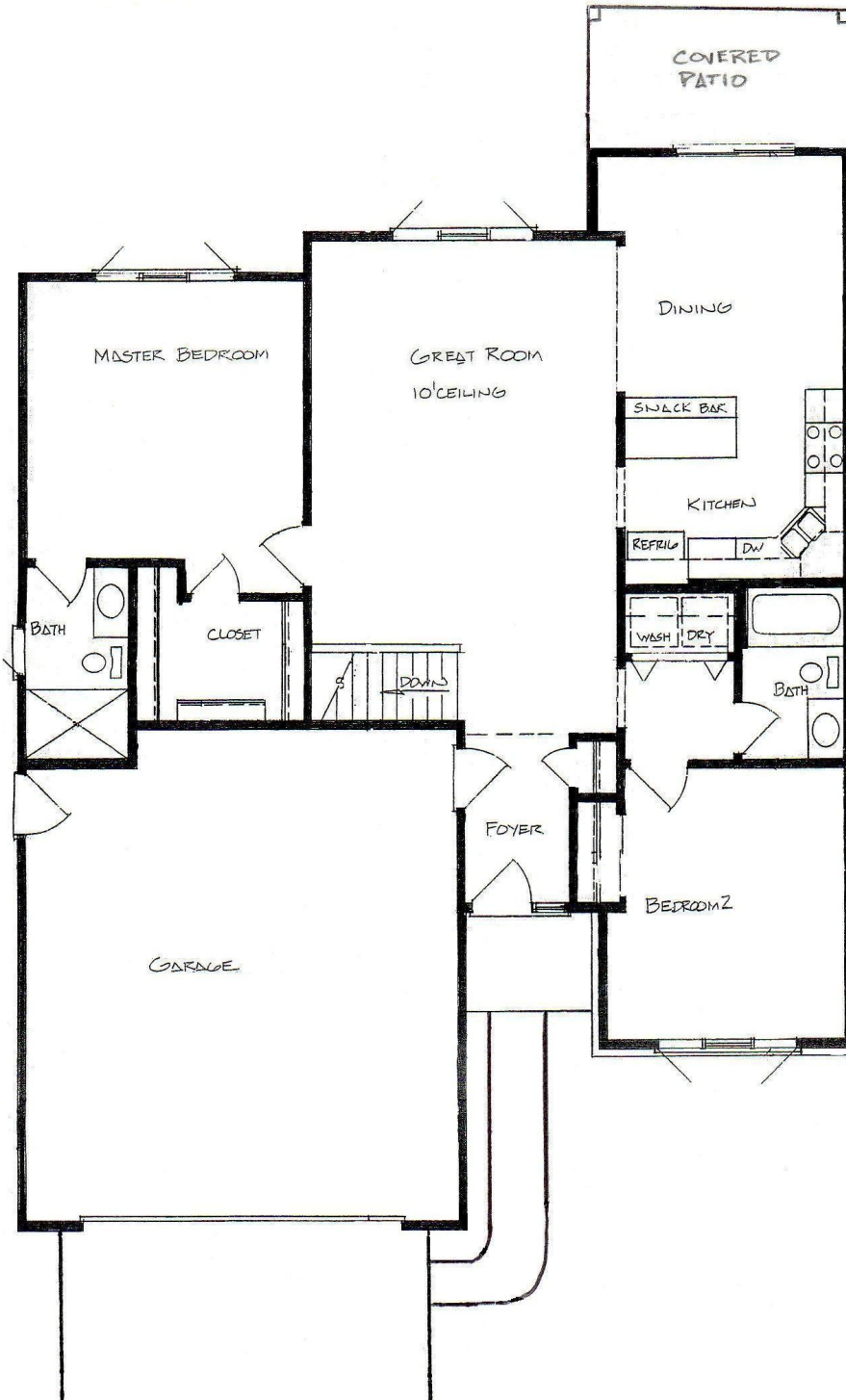
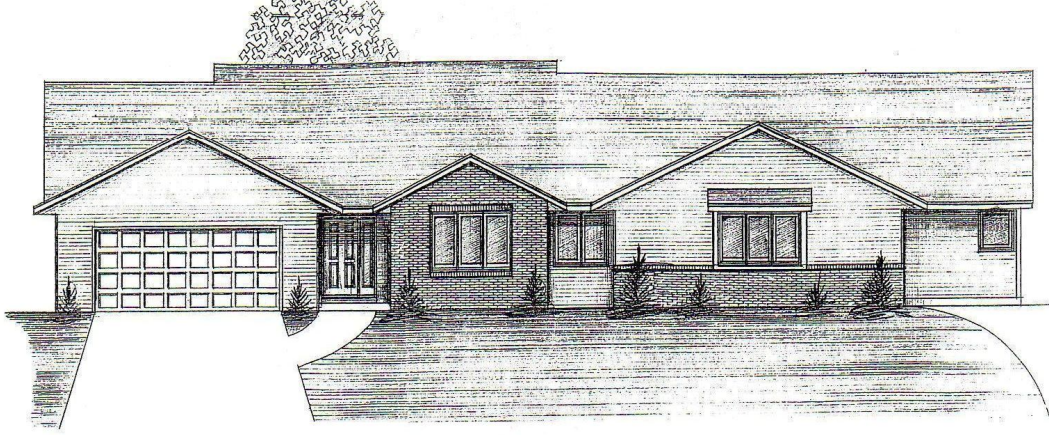
- 1354 sq. ft.
- Two Bedroom
- Master Suite
- Main Bathroom
- Kitchen
- Dining
- Great Room
- First Floor Laundry
- Two Car Garage
- Covered Patio
- No Step Entry





**RED HAWK**  
CONDOMINIUMS

- MAIN LEVEL**  
 1358 sq. ft.  
 Two Bedroom  
 Master Suite  
 Main Bathroom  
 Kitchen  
 Dining  
 Great Room  
 First Floor Laundry  
 Two Car Garage  
 Covered Patio  
 No Step Entry



**RED HAWK**  
CONDOMINIUMS

- MAIN LEVEL**  
 1365 sq. ft.  
 Two Bedroom  
 Master Suite  
 Main Bathroom  
 Kitchen  
 Dining  
 Great Room  
 First Floor Laundry  
 Two Car Garage  
 Covered Patio  
 No Step Entry